

上海

CENet 2013 中国·上海

International Conference on Computer Engineering and Network

Conference Guide

Shanghai . China
July 20-21 . 2013



How to Get to Shanghai



By Plane

Shanghai has two main airports, with Pudong the main international gateway and Hongqiao serving mostly domestic flights, so be sure to check which one your flight is leaving from. Transfer between the two takes about 1 hour by taxi. There are also direct shuttle buses. You can get between the two airports in nearer by Metro line two. Pudong (PVG) is Shanghai's main international airport, 40 km to the east of the city. There are two gigantic terminals (T1 and T2). A free shuttle bus service connects the two in case walking a few minutes (or using the conveyor belts) are too cumbersome.



Always take public transportation with official certificate.

When you take taxi, always notice the meter is turned on.

VISA

Visas are required for some nationalities to travel to China. Please contact your travel agency and/or the Chinese Consulate/Embassy in your country for exact details and visa application procedures as soon as possible. Visa processing times can vary. Participants are highly recommended to apply for Tourist Visa; the organizing committee will issue official letters only to assist the VISA application but do not guarantee.

Embassy of People's Republic of China in Canada
<http://ca.china-embassy.org/eng/lsw/gzrz/vusa/>



By Train

Shanghai has a few major train stations including: Shanghai Railway Station. Shanghai's oldest, located in Zhabei district, on the intersection of Metro Lines 1, 3 and 4. Some high-speed trains and trains to Hong Kong terminate here. Shanghai Hongqiao Railway Station, is massive in size and located in the same building complex with Hongqiao Airport. The connecting Metro stop shares the same name, Hongqiao Railway Station, and is one stop beyond the Hongqiao airport stop on Metro Lines 2 and 10. High-speed trains to Beijing, Hangzhou, Nanjing, Ningbo, Qingdao, Suzhou, Tianjin, etc., and other smaller stations use this station.



By Bus

There are several long-distance bus stations in Shanghai. You should try to get the tickets as early as possible. Shanghai Long-Distance Bus Terminal - Zhabei District Road No. 1666. This is one of the largest and is just west of the main railway station. It serves most destinations in Jiangsu and Zhejiang provinces as well as some more remote cities, such as Beijing and Guangzhou. From Shanghai Railway Station (North) subway station (Lines 3 & 4) take exit No. 4. You'll come out at the edge of a municipal bus transfer point. Head left (west) and walk along the front of the North Square train station. Cross the bus/taxi road, walk around to the front of the building, and you'll see it.



By Taxi

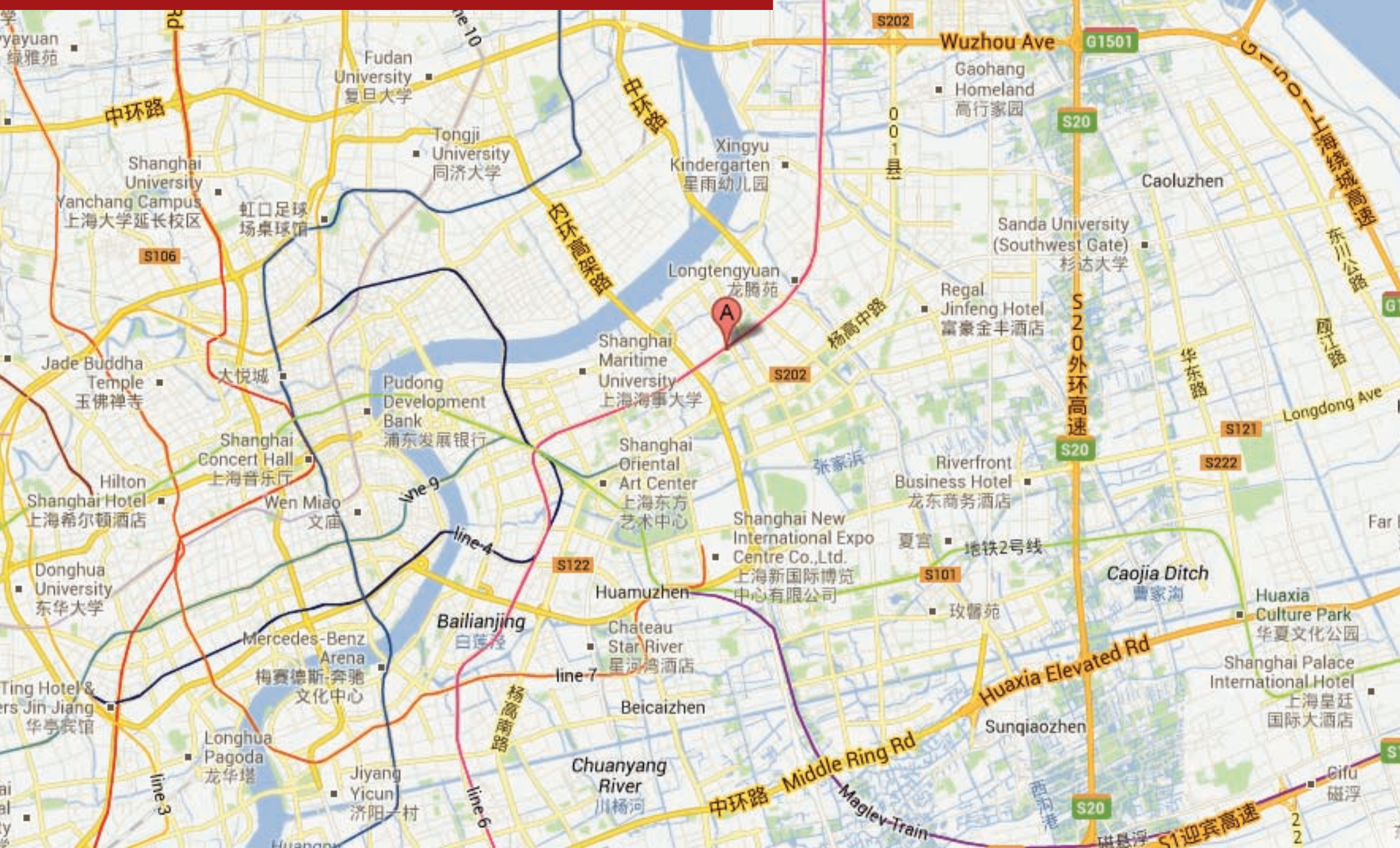
Taxi usually is not recommended way of transportation when you want to go to Shanghai from another city.



By Driving

Not recommended for overseas traveler.

Location of The Celebrity Garden Hotel





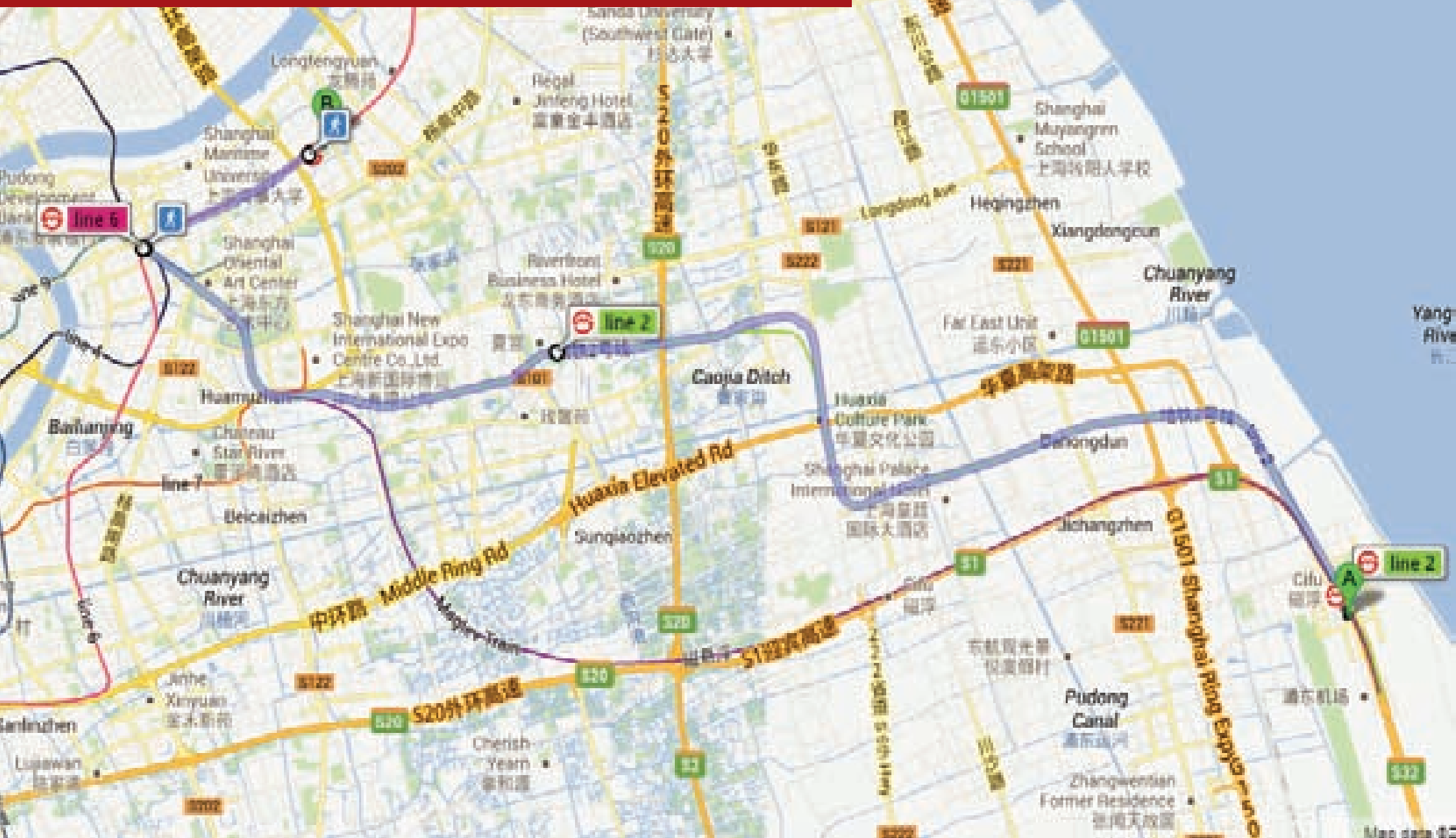
The Celebrity Garden Hotel (Mingrenyuan binguan) situated in Mingren Yuan, a garden boasts a beautiful view with a rippled lake and exuberant trees. The hotel is close to the New International Convention Center and about 15km to the railway station. There are 119 guestrooms and 5 Europe style villas within this hotel, all with air-conditioning, satellite TV, a minibar and direct dial phones. Business facilities include a business center and various size meeting rooms. The hotel's Chinese restaurant serves Shanghai local cuisine. There is also a bar within the hotel. For recreation, there is an outdoor swimming pool, bowling alley, tennis court, squash and sauna center.

Address: ***No.2988 Zhangyang Road, Pudong New District, Shanghai 200135, China (Lujiazui)***



A detailed map of Shanghai, China, illustrating the route from Hongqiao Airport/Railway Station to the hotel. The map highlights the Huangpu River, major highways (G2, G42, G50, S20, S106, S122, S124), and the extensive subway system. Key locations marked include Nanxiangzhen, Taopu Qicun, Graceful Phoenix Town, Tongji University, Xingyu Kindergarten, Longtengyuan, Shanghai Maritime University, Shanghai Oriental Art Center, Shanghai New International Expo Centre Co., Ltd., Huamuzhen, Chateau Star River, Beicaizhen, Chuanyang River, Jinhe, Xinyuan, Sanlinzhen, Lujiawan, Jinjiang Action Park, Yuloon Hotel, Qibaozhen, Qixin Rd, Jiamin Elevated Rd, Wangjiaku, Lanyin Huating, Jiangqiaozen, Shanghai Jiangsu Hotel, Jade Buddha Temple, Hilton Shanghai Hotel, Donghua University, Hua Ting Hotel & Towers Jin Jiang, Shanghai Normal University, and Jinjiang. The map also shows the locations of the Shanghai Concert Hall, Wen Miao, Mercedes-Benz Arena, Longhua Pagoda, and Jiyang Yicun. The route from Hongqiao Airport/Railway Station is indicated by a red line, passing through the Pudong Development Bank and the Shanghai Oriental Art Center, and ending at the hotel location marked with a red 'X'.

Pudong airport to hotel



The map displays the Shanghai Metro network, with Line 4 (purple) and Line 6 (pink) prominently featured. Line 4 runs from the northwest to the east, passing through the city center and Pudong. Line 6 runs from the center to the southeast, connecting the city to the airport area. Other lines shown include Line 1 (red), Line 2 (blue), Line 3 (green), Line 9 (dark blue), and Line 10 (orange). The map also shows major roads like Yan'an Elevated Rd, Fuxing East Rd, and various landmarks such as the Jade Buddha Temple, Shanghai Arts and Crafts Museum, and the Shanghai New International Expo Centre.

How to Get to Conference Hotel



From Shanghai Railway Station/
Long Distant Bus Station:



Shanghai Railway Station / Centre Long-distance Bus Station(14km):
Metro line 4 to Shiji Boulevard, transfer Metro line 6 (Gangcheng) to
Deping Road, exit 1, then arrive The Celebrity Garden Hotel by taxi or
walk



Shanghai Hongqiao Railway Station/
Shanghai Hongqiao International Airport

Shanghai Hongqiao Railway Station/Shanghai Hongqiao International
Airport(28km/26km): Metro line 2 (Guanglan) to Shiji Boulevard,
transfer Metro line 6 (Gangcheng) to Deping Road, exit 1, then arrive
The Celebrity Garden Hotel by taxi or walk



Shanghai Pudong International Airport:

Shanghai Pudong International Airport(40km): Metro line 2 (Xujing
East) to Shiji Boulevard, transfer Metro line 6 (Gangcheng) to
Deping Road, exit 1, then arrive The Celebrity Garden Hotel by taxi
or walk



Tourist Consultant:

Contact : Patrick Chen

Tel : +86 21 23115523

Fax : +86 21 63366972

E-mail : woya@meet-in-shanghai.net

Shanghai Introduction



Location: 31°12'N 121°30'E



Population: 23,019,148 (2011)



Area: 6,340.5 km²(2,448.1 sq mi)



Elevation: 4 m (13 ft)

Shanghai Metro



上海 Shanghai

While Shanghai has been around as a village since the Song Dynasty, a thousand years or so ago, it only rose to prominence after China lost the First Opium War in 1842. Shanghai was one of five cities which were opened to trade as treaty Ports. Shanghai grew amazingly after that; until then nearby cities like Hangzhou, Suzhou and Nanjing had been far more important, but today Shanghai is definitely the center of the region.

Shanghai reached its zenith in 1920's-1930's and was at that time the most prosperous city in East Asia. Despite this prosperity, much of the streets of Shanghai were ruled by the triads during that period, with the triads often battling for control over parts of Shanghai. That period has been greatly romanticised in many modern films and television serials, one of the most famous being *The Bund*, which was produced by Hong Kong's TVB in 1980. Shanghai also became the main center of Chinese entertainment during that period, with many films and songs produced in Shanghai.

Today, Shanghai's goal is to develop into a world-class financial and economic center of China and Asia. In achieving this goal, Shanghai faces competition from Hong Kong, which has the advantage of a stronger legal system and greater banking and service expertise. However, Shanghai has stronger links to the Chinese interior and to the central government in addition to a stronger manufacturing and technology base. Shanghai is one of the least polluted major cities in China, visitors will find a much different experience than visiting Beijing.



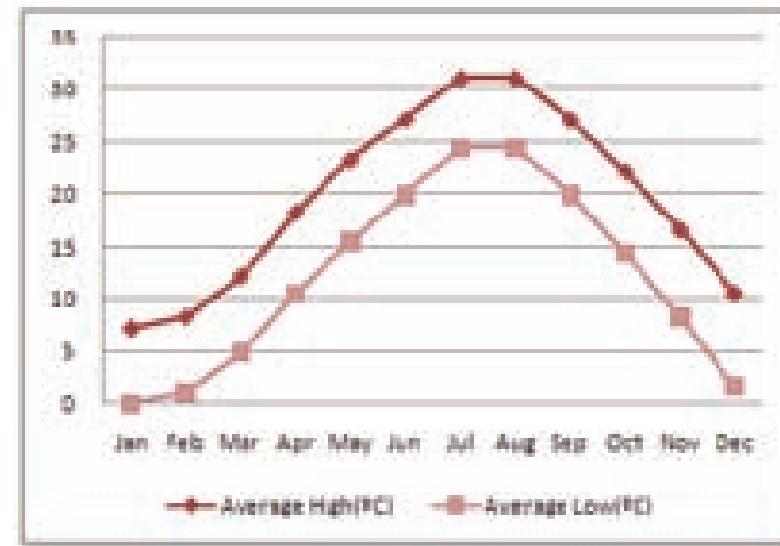
Shanghai

Weather

Shanghai's latitude relative to the equator is about the same as New Orleans, Brisbane, or Cairo; the climate is classified as humid subtropical. Summer temperatures at noontime often hit 35–36°C with very high humidity. Freak thunderstorms also occur relatively often during the summer. There is some risk of typhoons in their July-September season.

In contrast, during winter, temperatures rarely rise above 10°C during the day, and often fall below 0 °C at night. Snowfall is rare.

In between, spring can feature lengthy periods of cloudy, often rainy, weather, while fall is generally mild to warm and sunny.



| | Jan | Feb | Mar | Apr | May | Jun | Jul | Aug | Sep | Oct | Nov | Dec |
|-----------|------|-------|-------|-------|-------|-------|--------|--------|--------|-------|------|-------|
| High (°C) | 8 | 9 | 13 | 19 | 24 | 28 | 32 | 32 | 28 | 23 | 17 | 11 |
| Low (°C) | 0 | 2 | 5 | 11 | 16 | 20 | 25 | 25 | 20 | 15 | 9 | 2 |
| Rain (mm) | 38.1 | 58.42 | 81.28 | 101.6 | 114.3 | 152.4 | 129.54 | 132.08 | 154.94 | 60.96 | 90.8 | 35.56 |
| High (°F) | 45 | 47 | 54 | 65 | 74 | 81 | 88 | 88 | 81 | 72 | 62 | 51 |
| Low (°F) | 32 | 34 | 41 | 51 | 60 | 68 | 76 | 76 | 68 | 58 | 47 | 35 |
| Rain (in) | 1.5 | 2.3 | 3.2 | 4 | 4.5 | 6 | 5.1 | 5.2 | 6.1 | 2.4 | 2 | 1.4 |

Shanghai

Time

China standard time (UTC+8)

Bank

Banks in China usually provide US dollar currency exchange.

Working Time: Banks in China do open during weekend, but working time maybe vary.



Bank of China (BOC)
08:30 - 17:30 (Monday-Friday)



ICBC
08:30 - 17:00 (Monday-Friday)



HSBC (Nanjing)
09:00 - 17:00 (Monday-Friday)



Standard Chartered Bank(Nanjing)
9:00-16:30(Monday to Friday)



Citibank (Nanjing)
9:00-16:30(Monday to Friday)

Most of the banks with international businesses have branches or offices in Shanghai, please contact your bank for the information before make the trip.



Please make sure always deal at bank counter, do not do business with personnel.

Post Office

Downtown area: 8:00-17:00 (all week)

Shopping

Shopping mall: 8:00-22:00 (all week)
Supermarket: 8:00-22:00 (all week)
Suguo Convenience Store 24:
24-hour (all week)

Electricity

The electricity in China is generally 220V, 50HZ
Chinese standard socket is different from European, American, British, South African standard, please be prepare in advance.

Special needs

Delegates and accompanying people with disabilities are invited to advise the the Secretariat of any special requirements

Shanghai

Pharmacy

Most pharmacies are open during 7 days a week from 8:00-18:00. If you have certain needs, please consult the secretariat for assistance.

Currency

The Chinese currency is called "Renminbi" with sign "¥", code "CNY", the primary unit of renminbi is "Yuan". One Yuan is subdivided into 10 Jiao, which is subdivided into 10 fen (cent) 1 Chinese Yuan equals 0.16 US Dollar

Useful Phone Number

110: Police (all emergencies)
12110: Police(text message)
120: First-aid Ambulance
119: Fire
122: Traffic Accident
12395: SOS in Water

Specialties in Shanghai
Yuyuan Gardens, (in Old City). For a feel of the China of yesteryear loaded with classical Chinese architecture (the countless vendors just outside the gardens may lead to some frustration, so don't come here thinking 'tranquility'). ¥ 40..



Classic (Western) architecture. For a taste of 1920s Shanghai, head for the stately old buildings of the The Bund or the French Concession, too many to list here! Some of the best sections are along Hunan Rd, Fuxing Rd, Shaoxing Rd and Hengshan Rd. The area is fast becoming famous for boutique shopping along Xinle Rd, Changle Rd and Anfu Rd, all of which also have interesting restaurants.

Shanghai 上海



Modern architecture . Some of the tallest and most inspiring structures in Asia and the world can be found along the Huangpu River bank in Pudong's Lujiazui District. Two of considerable mention are Oriental Pearl Tower, one of the tallest structures in Asia, providing visitors with city views (different tours available) or light shows (at night) from below (free), Jin Mao Tower, which is staggering 88-story behemoth, and the Shanghai World Financial Center, the third largest building in Asia and the world, and world's largest by roof height, containing the world's highest observation deck, at 474 m (1555 ft) .

Oriental Pearl Tower. Right in the middle of the skyline+ This is a must see! (120 RMB for going up, Oct 2012)

Zhujiajiao Water Town. The picturesque Zhu Jia Jiao is a classic water village, over 400 years old with a signature five-arch bridge spanning the Cao Gang River. Zhu Jia Jiao was an important town for local trade, shipping goods in and out of its manmade canals to the river. After about 40 minutes drive from the city, you will arrive at Zhujiajiao-the Ancient Water Town. Its main street is lined with quaint shops and restaurants serving local favorites. You can stroll the maze of paths and bridges, and take a boat ride to view the residences of this nicely-preserved water village. Zhu Jia Jiao is also home to two impressive temples, which add to the charm and historic significance of the village



上海 Shanghai 港

Helping Tools:



China Map HD

<https://itunes.apple.com/cn/app/id454136971?l=zh&mt=8>

China Travel Buddy:

<https://itunes.apple.com/cn/app/id475299915?l=zh&mt=8>

China Metro:

<https://itunes.apple.com/us/app/id437182766?mt=8>

Chinese Translation:

<https://itunes.apple.com/cn/app/id386713296?mt=8>



China Metro:

https://play.google.com/store/apps/details?id=cn.zhangqingtian.shenzhensubway&feature=search_result

China Travel Guide Lite

https://play.google.com/store/apps/details?id=com.martview.chinatravelguide.lite&feature=search_result

Google Translate:

https://play.google.com/store/apps/details?id=com.google.android.apps.translate&feature=search_result

Reference:

Shanghai Tourism <http://www.meet-in-shanghai.net/>

Shanghai Metro <http://www.shmetro.com/EnglishPage/EnglishPage.jsp>

Shanghai Government: <http://www.shanghai.gov.cn/shanghai/node27118/index.html>

Shanghai Wikitravel: <http://wikitravel.org/en/shanghai>

Shanghai Wikipedia: <http://en.wikipedia.org/wiki/shanghai>

China Meteorological Administration: <http://www.cma.gov.cn/>

Metro Wikia Shanghai: http://metro.wikia.com/wiki/Shanghai_Metro

Shanghai Climate Map: <http://www.shanghai.climateps.com/>

ChinaHighlights: <http://www.chinahighlights.com/shanghai/weather.htmf>

Shanghai Railway Station Wikipedia: http://en.wikipedia.org/wiki/Shanghai_Railway_Station

Shanghai Hongqiao Railway Station:

http://en.wikipedia.org/wiki/Shanghai_Hongqiao_Railway_Station

Shanghai Train Guide: <http://www.visitshanghaicity.com/2010/05/shanghai-train.html>

Shanghai Hongqiao International Airport: <http://en.shairport.com/>

Shanghai Pudong International Airport: <http://en.shairport.com/>

CENet2013
July 20-21. 2013
Shanghai.China